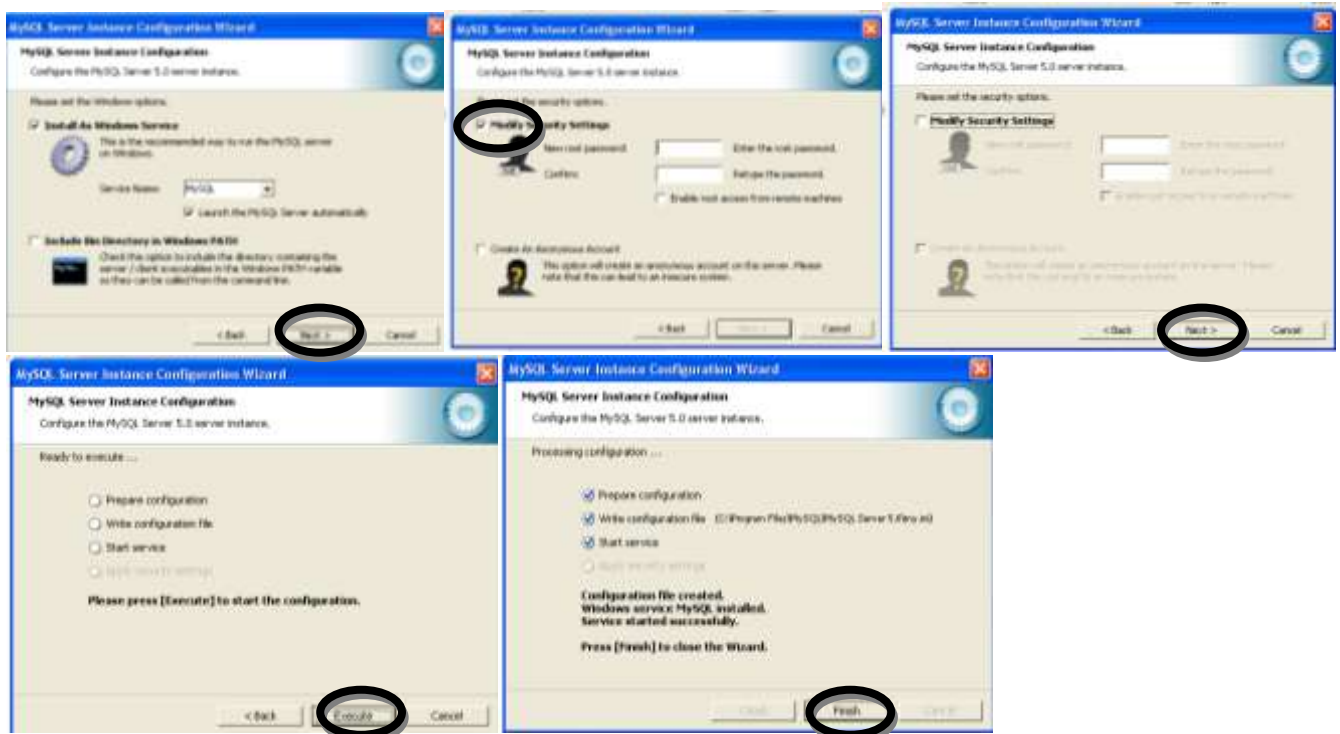
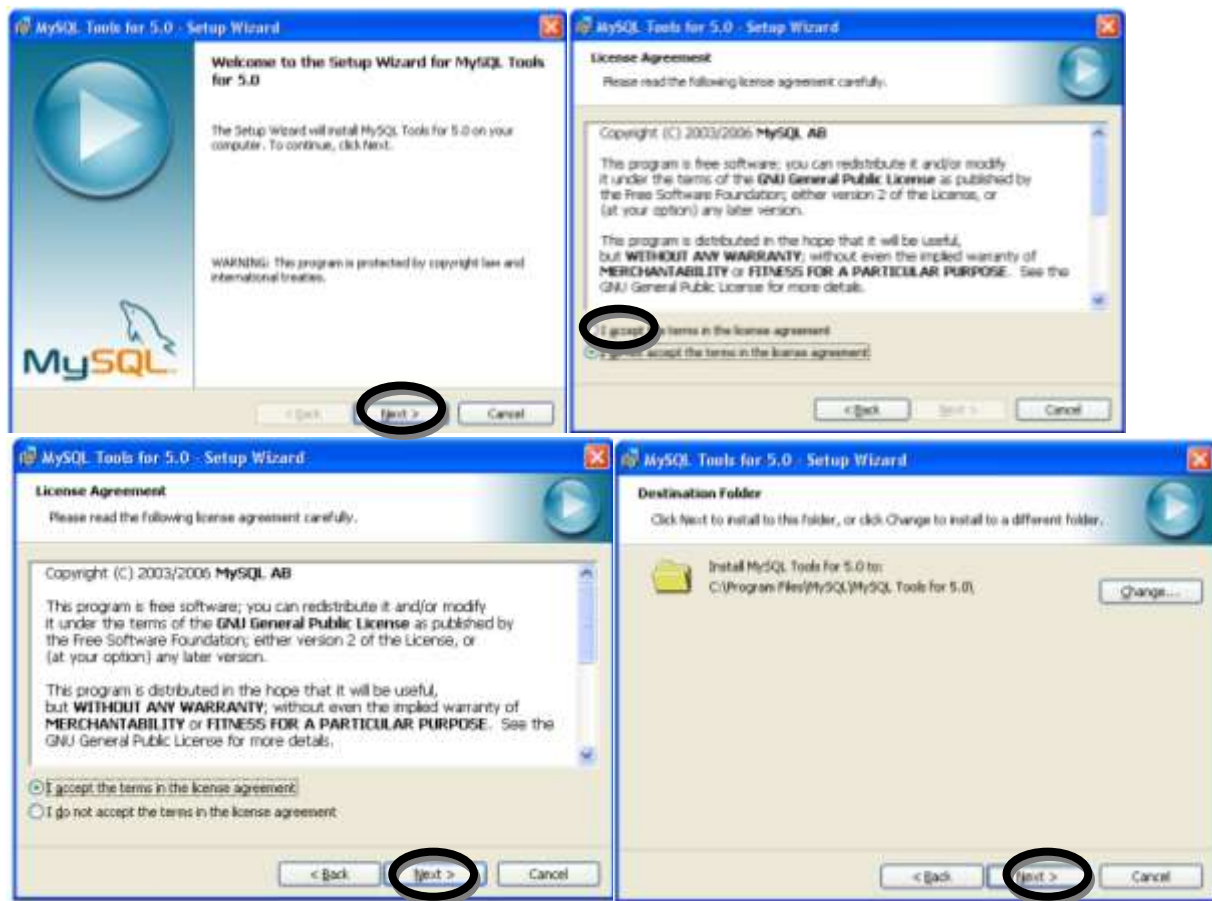


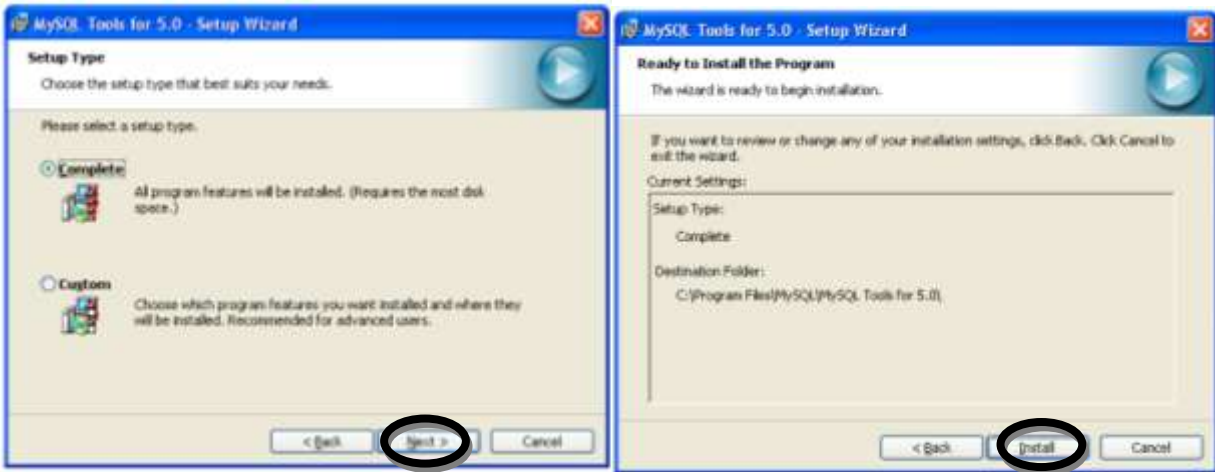
1. Install MySQL
 - a. Double klik file mysql-enterprise-5.0.56sp1-win32.exe
 - b. Ikuti instalasi dengan menekan tombol yang di tandai





2. Instalasi mysql Administrator
 - a. Double klik file mysql-gui-tools-5.0-r12-win32.msi
 - b. Ikuti instalasi dengan menekan tombol yang di tandai



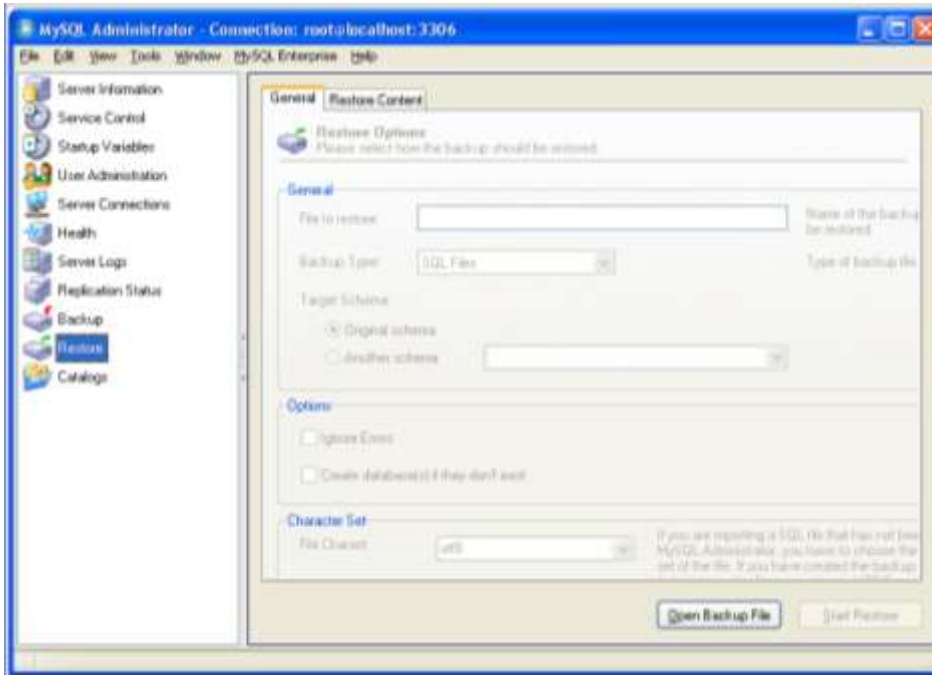


3. Import DataBase

- a. Start =>Programs=>MySQL=>MySQL Administrator



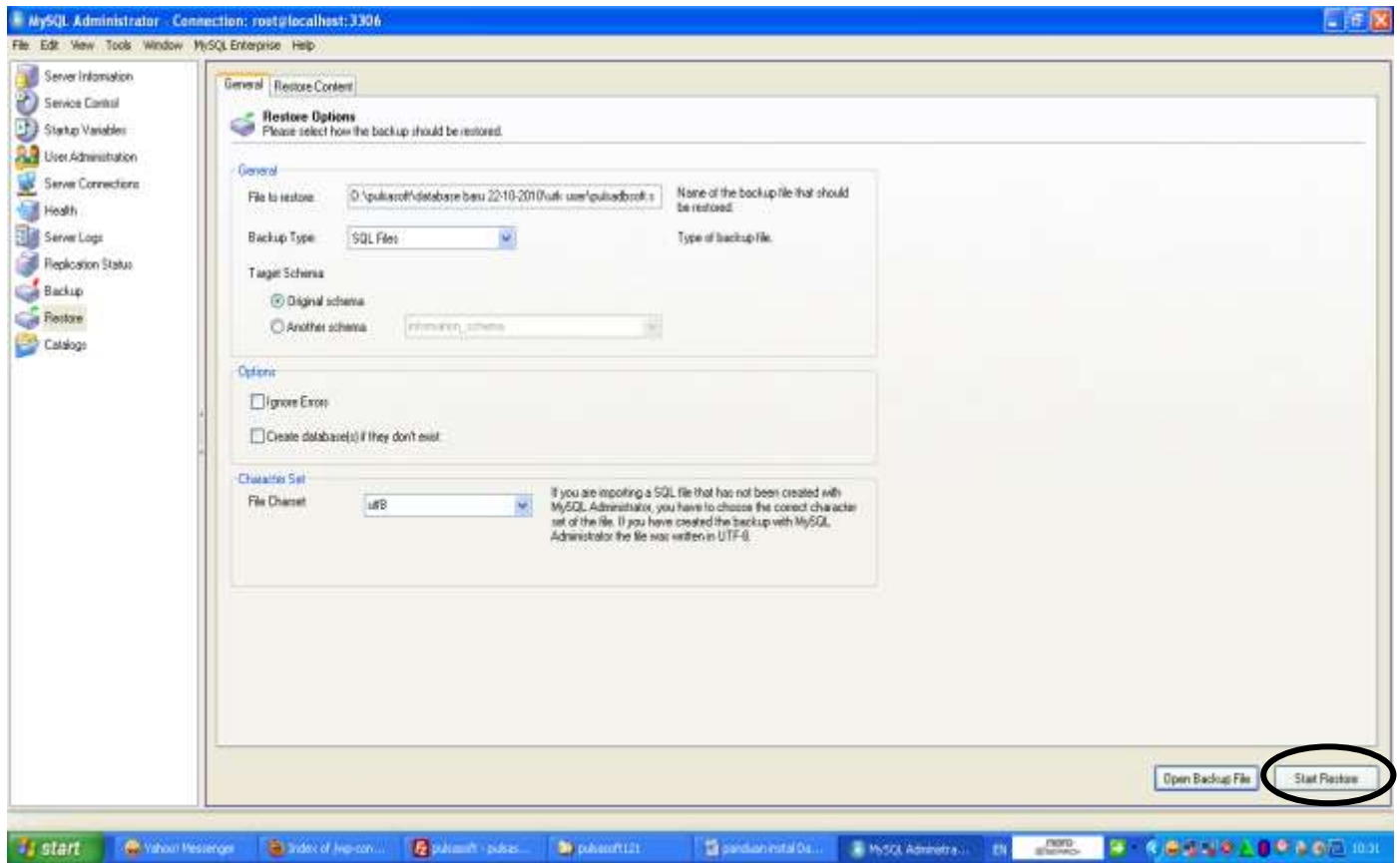
b. Isi **Server Host:localhost, Username:root, OK**



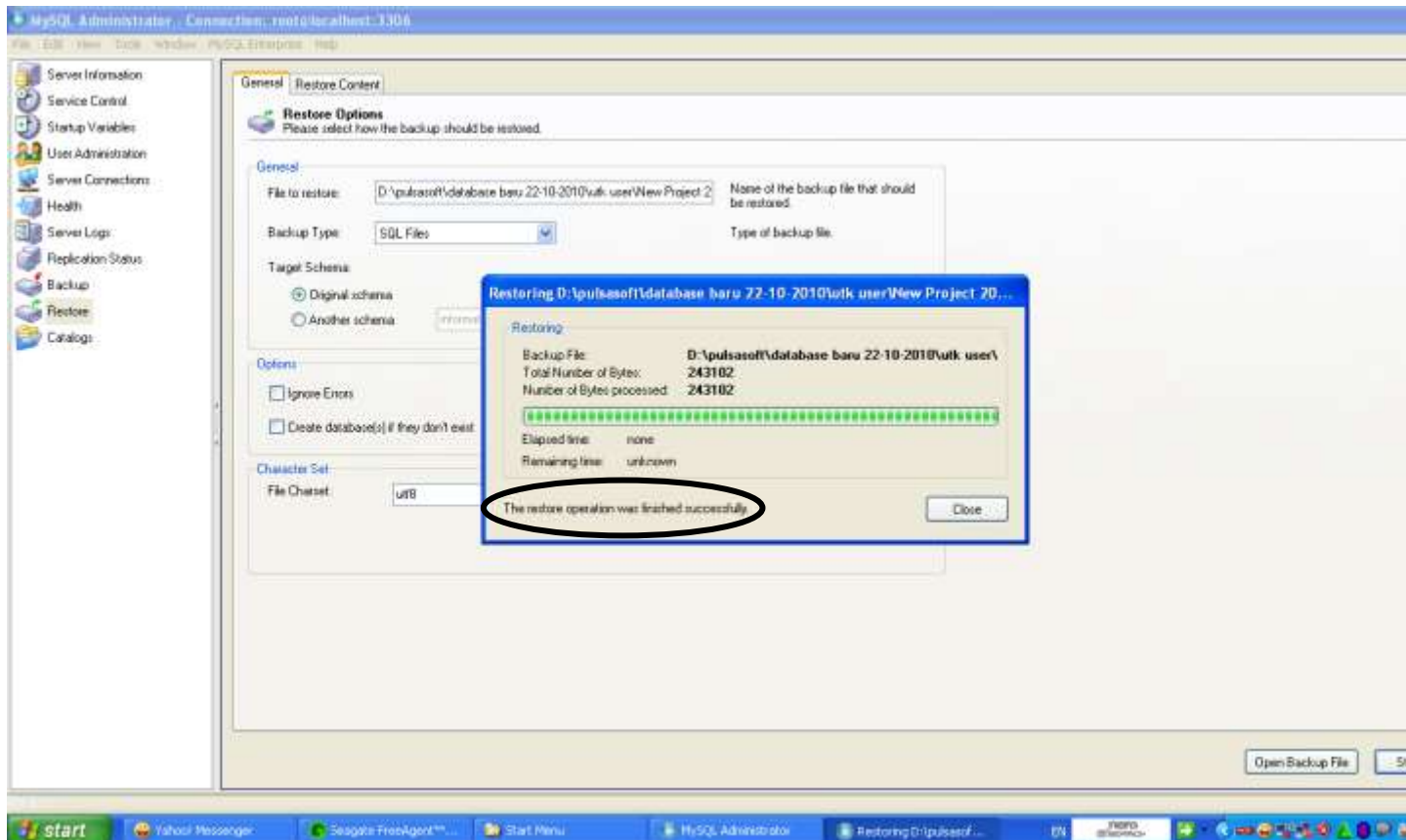
c. Pilih **Restore** pada bagian kiri kemudian klik **Open Backup File** untuk memilih file yang akan diimport/Restore



d. Arahkan ke file **pulsasoft.sql** kemudian klik **Open**



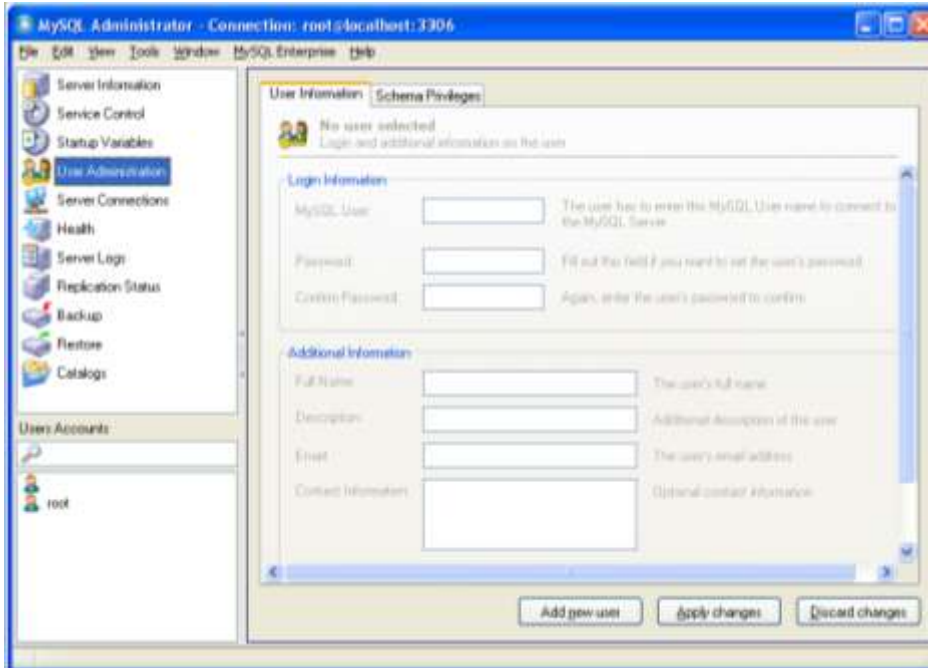
e. Klik tombol **Start Restore** tunggu proses sampai selesai



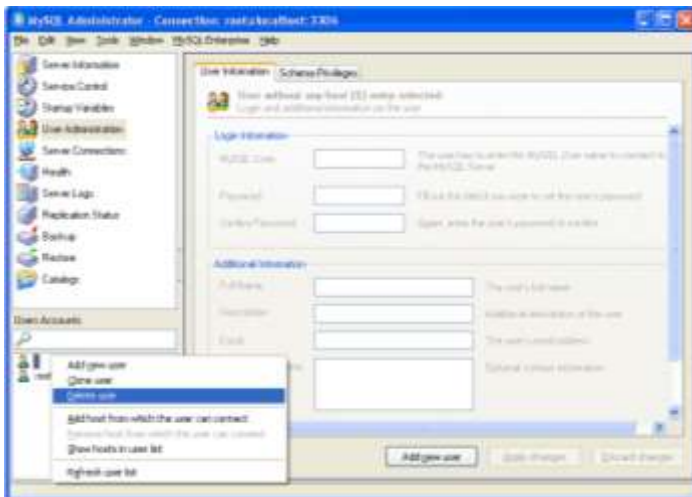
f. Klik **Close**

4. Membuat User

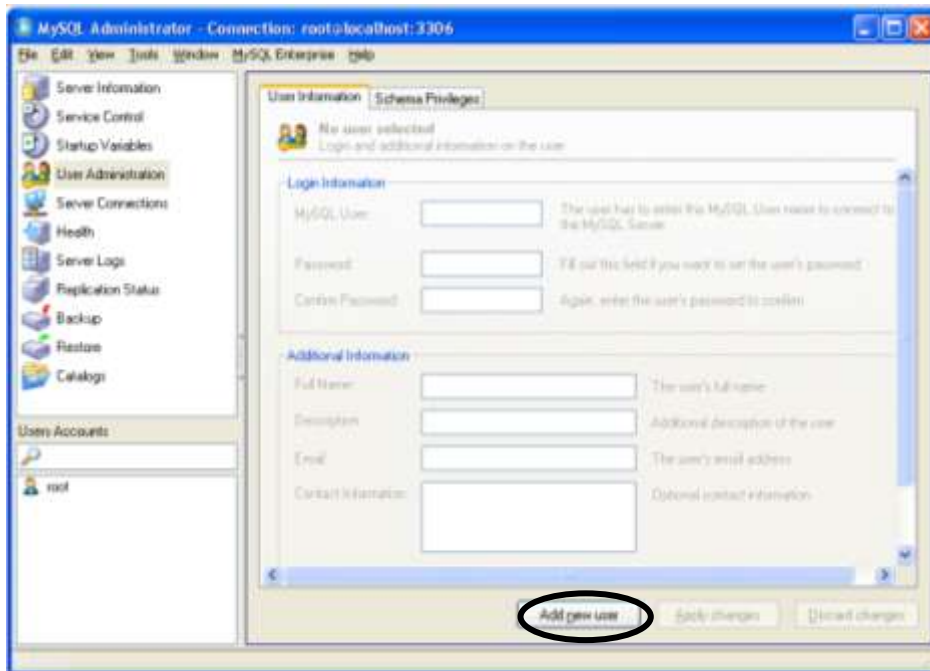
- a. Klik **User Administration** pada bagian kiri, perhatikan Users Accounts pada bagian bawah, hapus user yang tidak bernama.



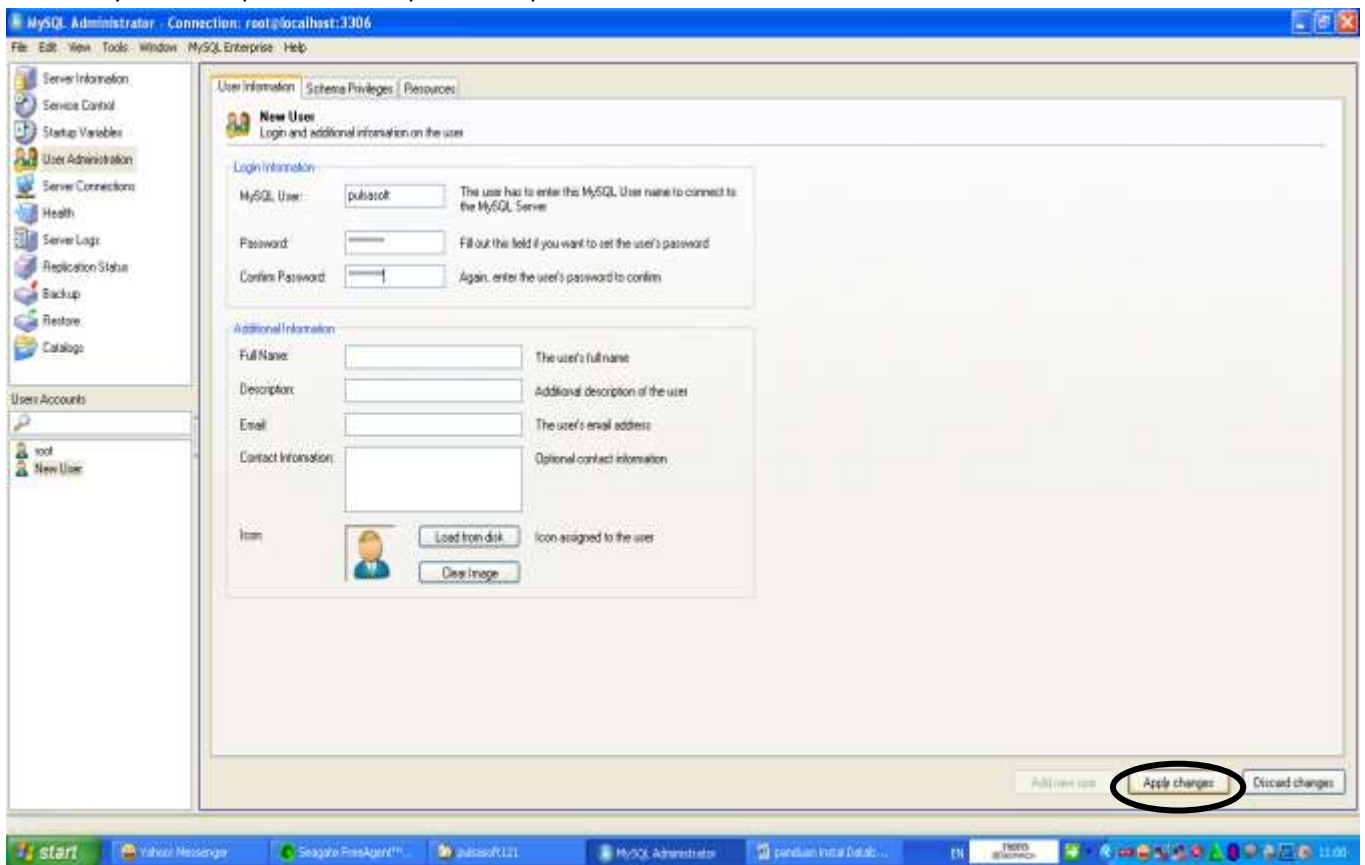
- b. Klik kanan user yang tidak bernama, kemudian klik menu **Delete user => Yes**



- c. Untuk membuat User baru klik tombol **Add new user**

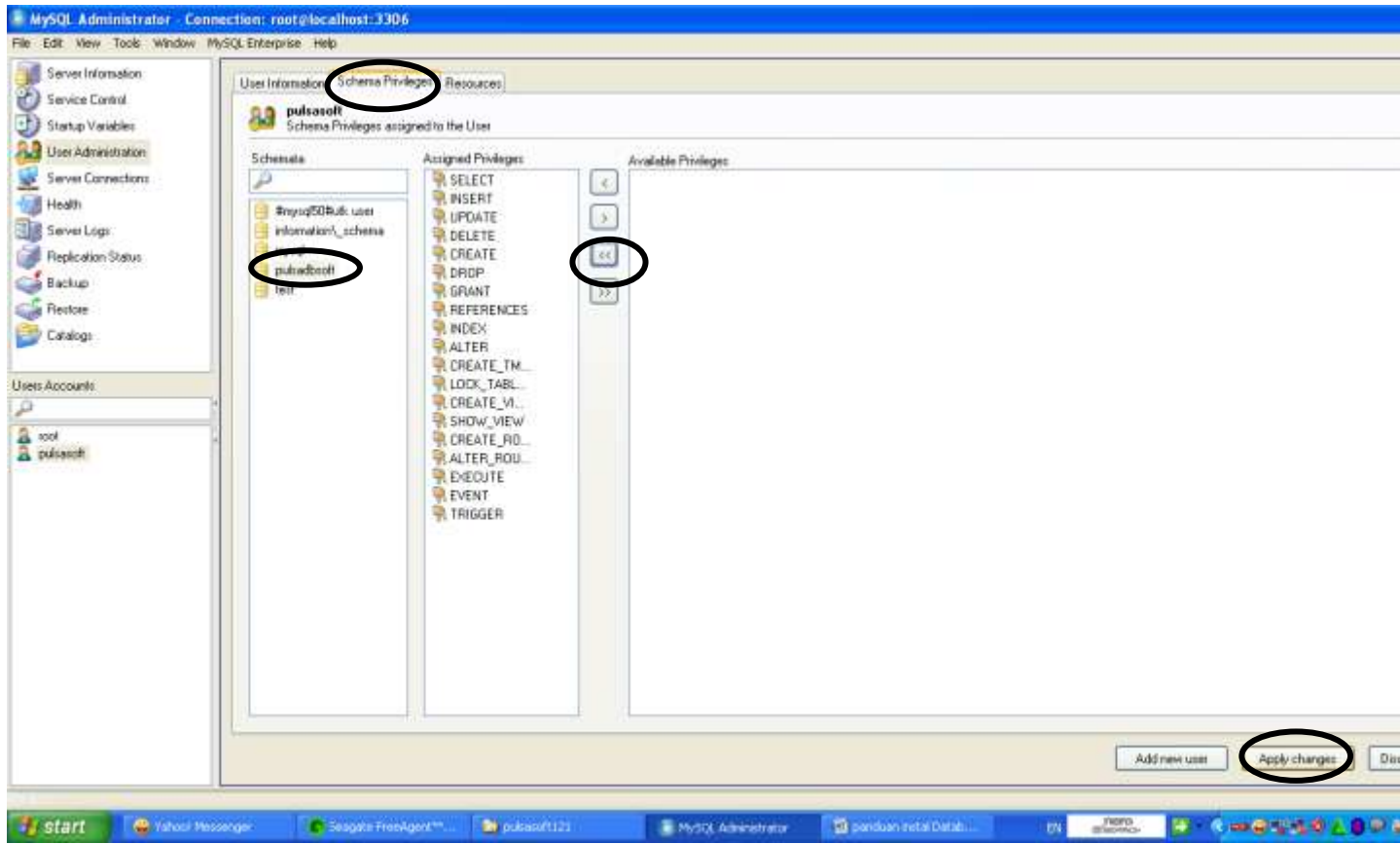


d. Isi MySQL User:pulsasoft dan password:pulsasoft



e. Kemudian klik tombol **Apply changes**

f. Klik tab **Schema Privileges => Pulsasoft => klik tombol <<**



g. Klik tombol **Apply changes**

5. Diagram

